



## The Company

Simonsen Landscapes was founded in Dresden in July 1996. We are a Landscape Architecture office which highly orientates itself on practice and function. Objectives-oriented thinking and doing in long-term economic as well as creative-functional terms are the basis for success for Simonsen Landscapes.

Our ideas for open spaces and landscapes distinguish themselves:

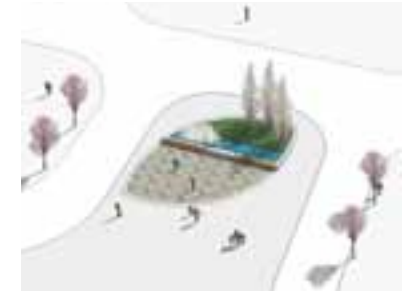
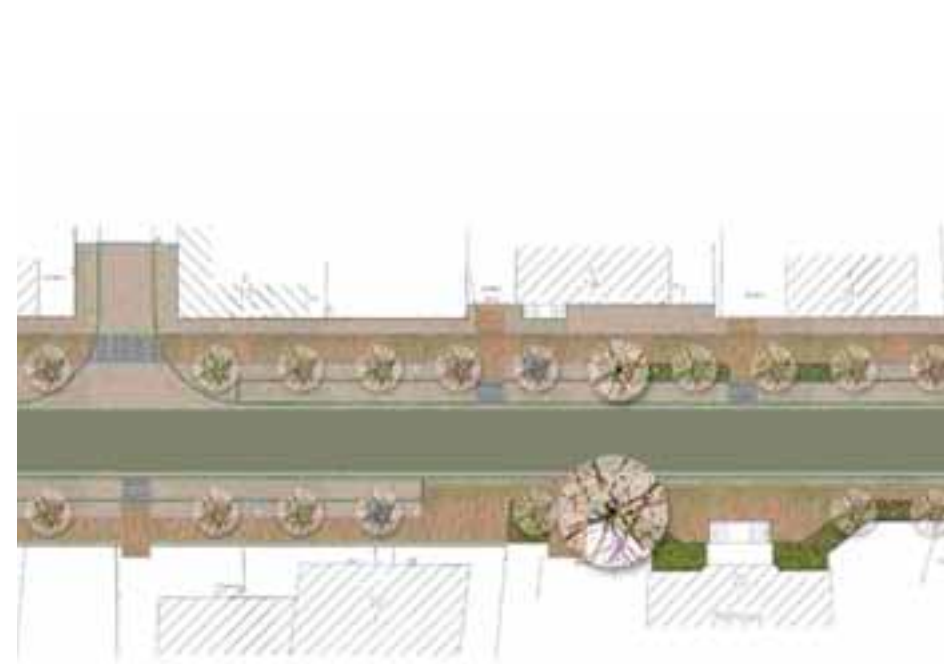
- by many years of practical experience
- by approaches which take into consideration and confine themselves to the most vital functions
- by interdisciplinary working methods, also with moderating guidance
- by focussing on the distinctive conditions of the specific place or site taking into consideration its history and social structure
- by a comprehensive supervision and assistance from the first phase of the project development through to the maintenance optimization



## Public free space design and the design of squares

The design of public spaces is decisive for the quality and the acceptance of an urban area. In this regard we firstly concentrate on thorough research of the historic development before we work on the functions, the use and the requirements of the traffic engineering. Afterwards we decide on the materials and the planting of vegetation and chose adequate lighting. Our planning results in spaces which adapt to the already existing context.

Tree-lines road leading up to the castle and public free spaces Moritzburg  
Signs Dresden Neustadt



## Domestic architecture and construction of business facilities

The external works around a property are generally not included into an assessment on the subject of the cost-effectiveness of this property. However, their state and quality determine public esteem and the ability to lease. As a mirror of the philosophy of the respective company attractive external works shape the impression a property gives to clients, employees as well as other competitors. We therefore attach great importance in particular to clients, target groups and to the identity of the enterprise. By creating strong and wide green spaces we help to make it a success.

Waldschlösschenareal Dresden  
City Gardens Strehlen Dresden



## Industrial facilities and wholesale facilities

Economical requirements and functional internal processes form the basis for the planning of an internal road network. We achieve the optimal connection between all starting points through a selective layout of paths as well as an adequate size of the areas for delivery and dispatch. We plan in an interdisciplinary manner the economic use of rainwater, the planting of vegetation, noise and dust protection as well as compensating measures. We create a final solution which is tailor-made to the respective project.

IKEA furnishing house Dresden

Business Park Zeitenströmung Dresden





## School and sports facilities

The open spaces near schools which are designed according to educational concepts are places for the somatic and aesthetical education. In this respect we take into consideration the different requirements of the various age groups and attach great importance to a high quality of life within the school environment. The sports facilities are, of course, integrated into the entire complex. We like to contribute to considerable learning success in schools.

96. Primary School Dresden  
Day-care centre for children Friedewald



## Town planning

Cities and towns are dynamic structures. They are constantly changing. No matter whether we speak about expansion or reduction, we elaborate the necessary preconditions as to the planning in order to guarantee a sustainable and regulated development in any case. Entire town development concepts which represent plans for the future development of a town or a region are part of this. The scope of our service reaches from a single project within a strategy to the entire overall planning.



## Our methods for planting and creating green spaces

Green areas and spaces which are created in accordance with the phenological calendar enable us human beings to enjoy the seasons to a greater extent. Not only the effects created by the flowers in spring, but also the particularities of midsummer, autumn and winter are important for us. They confirm and illustrate what the site or the architecture wants to express.

From the vast number of species of plants, shapes and colours we chose a collection of plants most suitable for the respective site. We prefer speciose shrub compositions flanked by woody plants, which can easily be maintained and taken care of.





Friedrichstraße 29  
D-01067 Dresden

fon: +49 (0)351 / 81 69 20  
fax: +49 (0)351 / 81 69 222

[www: simonsen.de](http://www.simonsen.de)  
[e-mail: info@simonsen.de](mailto:info@simonsen.de)